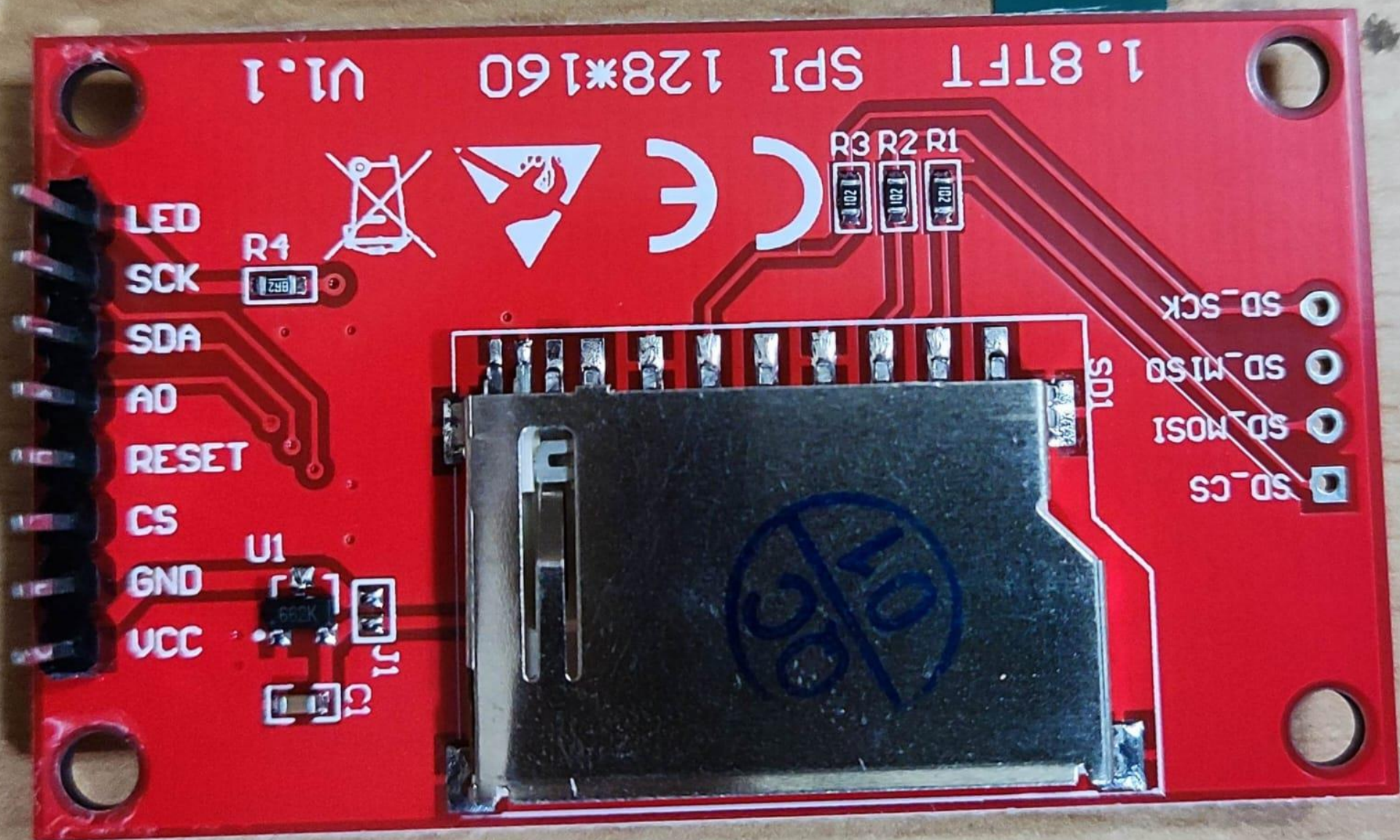


The background features a dark blue gradient with a starry space pattern. Overlaid on this are several technical diagrams, including circular gauges with numerical scales (e.g., 140, 150, 160, 170, 180, 190, 200, 210, 220, 230, 240, 250, 260) and various circular and curved lines, some with arrows indicating direction or flow. The text is centered in a clean, white, sans-serif font.

TFT 1.8 INCH TFT LCD MODULE 128X160 WITH NODEMCU

DINESH KUMAR
ISRO SATELLITE CENTER
BANGALORE



1.8TFT SPI 128*160 V1.1

LED
SCK
SDA
A0
RESET
CS
GND
VCC

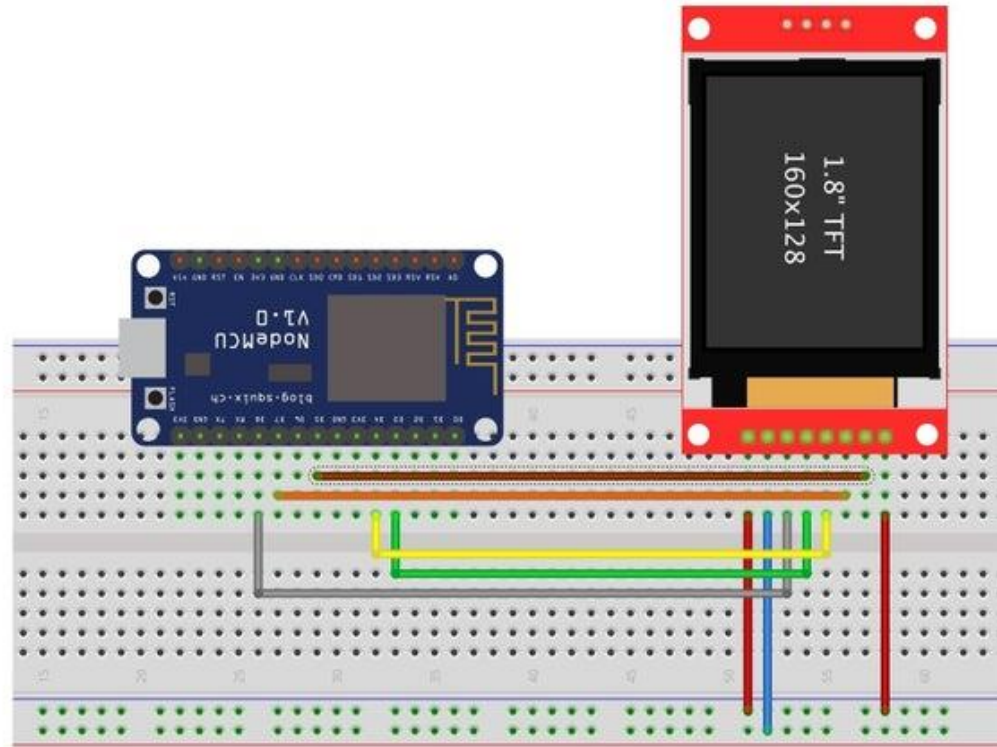
SD_CS
SD_MOSI
SD_MISO
SD_SCK

R4
R3 R2 R1

U1
J1

NodeMCU to Display

- D8 -> CS
- D7 -> SDA
- D5 -> CSK
- D4 -> A0
- D3 -> RESET
- Vcc -> 3.3V
- Led -> 3.3V
- GND -> GND



ForbiddenBit.com

```
#include <Adafruit_GFX.h>
#include <Adafruit_ST7735.h>
#include <Adafruit_ST7789.h>
#include <SPI.h>
#define TFT_CS          15
#define TFT_RST         0
#define TFT_DC          2
Adafruit_ST7735 tft = Adafruit_ST7735(TFT_CS, TFT_DC, TFT_RST);

void setup(void) {
  Serial.begin(9600);
  tft.initR(INITR_BLACKTAB);
  Serial.println(F("Initialized"));
  tft.fillScreen(ST77XX_BLACK);
  testdrawtext(" Dinesh Kumar, J2 Road, Jeevan Bhima Nagar, Bangalore-560075, M-8884441744 ", ST77XX_WHITE);
  delay(7000);
}

void loop() {}

void testdrawtext(char *text, uint16_t color) {
  tft.setCursor(0, 0);
  tft.setTextColor(color);
  tft.setTextWrap(true);
  tft.print(text);
}
```